

Serie HP6000 racores de latón super rápidos para aplicaciones de lubricación

Nuevo

Diámetros externos: 4, 6 mm ; Roscas: métrica M5, M6x0,75, M6x1, M8x1, M10x1, M10x1,5, M12x1, M14x1.
ISO7 (BSPT): R1/8, R1/4. ISO-228 (BSPP): G1/8, G1/4



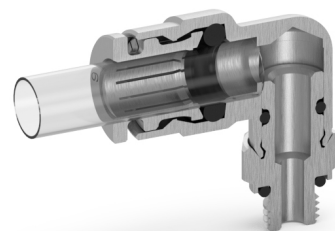
La Serie HP6000 está diseñada con un anillo de sujeción especial que proporciona una larga vida útil para los sistemas de lubricación, refrigeración y engrasado para aplicaciones industriales y de transporte. Gracias a su capacidad de fácil conexión y desconexión, a su diseño robusto y compacto y a los materiales utilizados en su construcción, estos racores rápidos son ideales para entornos industriales caracterizados por altas temperaturas y presiones de hasta 150 bar. La gama está disponible con diferentes roscas (métrica, ISO7 e ISO-228) y es adecuada para el uso con tubos rígidos y semi rígidos para satisfacer diferentes necesidades de aplicación.

- » La Serie HP6000 se utiliza en sistemas de lubricación centralizada:
 - Equipos de fabricación
 - Maquinaria de construcción
 - Automatización industrial
 - Transporte
 - Generación de energía eólica
 - Mantenimiento, reparación y revisión

- » Tubos utilizados:
 - Tubo de poliamida PA 12 HL - PA 12 PHL
 - Manguera de alta presión con cople de unión en su extremo.

DATOS GENERALES

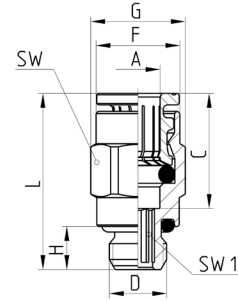
| | |
|----------------------------------|---|
| Temperatura | - 30°C ÷ 80°C (ver las características técnicas de los tubos usados) |
| Presión de funcionamiento | 0 ÷ 150 bar con aceite y grasa 0,9 ÷ 60 bar con aire (ver las características técnicas de los tubos usados) 3 ÷ 150 bar para la versión VNR (contacte nuestros ingenieros para gamas de alta presión) |
| Diámetros | ø 4 - 6 mm |
| Roscas | M5, M6x0,75, M6x1, M8x1, M10x1, M10x1,5, M12x1, M14x1. ISO7 (BSPT): R1/8, R1/4. ISO-228 (BSPP): G1/8, G1/4 |
| Fluidos | aceite y grasa para lubricación, aire comprimido |
| Tubo a conectar | aceite y grasa: PA 12 HL - PA 12 PHL Tubo de metal rígido con cople de unión en su extremo (tolerancia de tubos PA según ISO14743) aire comprimido: ***Poliamida (PA) 6 - 11 - 12, poliuretano (PU), polietileno (PE), poliéster hytrel |
| Materiales | - modelos estándar: cuerpo y mordaza en latón niquelado, junta tórica en NBR, juntas roscadas en NBR - modelos con VNR: cuerpo y mordaza en latón niquelado, muelle y bola en acero inoxidable, junta tórica en NBR |



Racores mod. HP6512



Conector macho
Rosca métrica paralela y BSPP ISO-228

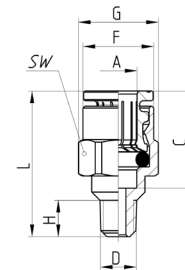


| Mod. | A | D | C | F | G | H | L | SW | SW1 | Peso (g) |
|----------------|---|--------|----|------|------|-----|------|----|-----|----------|
| HP6512 4-M5 | 4 | M5x0,8 | 14 | 7,8 | 8,8 | 4 | 20 | 8 | 2 | 4 |
| HP6512 4-M6x1 | 4 | M6x1 | 14 | 8,8 | 9,9 | 4,5 | 20,5 | 9 | 2,5 | 6 |
| HP6512 4-M8x1 | 4 | M8x1 | 14 | 8,8 | 11,5 | 6 | 19 | 10 | 2,5 | 8 |
| HP6512 4-M10x1 | 4 | M10x1 | 14 | 8,8 | 13,5 | 6 | 19 | 12 | 2,5 | 10 |
| HP6512 4-M12x1 | 4 | M12x1 | 14 | 8,8 | 15,4 | 7 | 20 | 14 | 2,5 | 14 |
| HP6512 4-1/8 | 4 | G1/8 | 14 | 8,8 | 13,5 | 6 | 19 | 12 | 2,5 | 10 |
| HP6512 4-1/4 | 4 | G1/4 | 14 | 8,8 | 16,4 | 7 | 20,5 | 15 | 2,5 | 14 |
| HP6512 6-M5 | 6 | M5x0,8 | 16 | 11,7 | 13,2 | 4 | 22 | 12 | 2 | 8 |
| HP6512 6-M6x1 | 6 | M6x1 | 16 | 11,7 | 13,2 | 4,5 | 25 | 12 | 2,5 | 8 |
| HP6512 6-M8x1 | 6 | M8x1 | 16 | 11,7 | 13,2 | 6 | 24,5 | 12 | 4 | 8 |
| HP6512 6-M10x1 | 6 | M10x1 | 16 | 11,7 | 13,5 | 6 | 21 | 12 | 4 | 10 |
| HP6512 6-M12x1 | 6 | M12x1 | 16 | 11,7 | 15,4 | 7 | 22 | 14 | 4 | 13 |
| HP6512 6-1/8 | 6 | G1/8 | 16 | 11,7 | 13,5 | 6 | 21 | 12 | 4 | 10 |
| HP6512 6-1/4 | 6 | G1/4 | 16 | 11,7 | 16,4 | 7 | 22 | 15 | 4 | 13 |

Racores mod. HP6510



Conector macho
Rosca métrica cónica y BSPT ISO-7

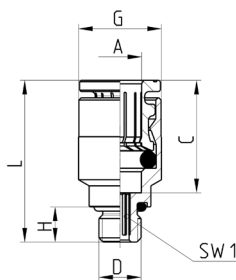


| Mod. | A | D | C | F | G | H | L | SW | Peso (g) |
|------------------|---|---------|----|------|------|-----|------|----|----------|
| HP6510 4-M6x0,75 | 4 | M6x0,75 | 14 | 8,8 | 10,9 | 6 | 21 | 10 | 6 |
| HP6510 4-M6x1 | 4 | M6x1 | 14 | 8,8 | 10,9 | 6 | 21 | 10 | 6 |
| HP6510 4-M8x1 | 4 | M8x1 | 14 | 8,8 | 10,9 | 6 | 18 | 10 | 8 |
| HP6510 4-M10x1 | 4 | M10x1 | 14 | 8,8 | 13,2 | 6 | 18 | 12 | 10 |
| HP6510 4-1/8 | 4 | R1/8 | 14 | 8,8 | 13,2 | 7,5 | 18,5 | 12 | 10 |
| HP6510 6-M6x0,75 | 6 | M6x0,75 | 16 | 11,7 | 13,2 | 6 | 24 | 12 | 8 |
| HP6510 6-M6x1 | 6 | M6x1 | 16 | 11,7 | 13,2 | 6 | 24 | 12 | 8 |
| HP6510 6-M8x1 | 6 | M8x1 | 16 | 11,7 | 13,2 | 6 | 23,5 | 12 | 8 |
| HP6510 6-M10x1 | 6 | M10x1 | 16 | 11,7 | 13,2 | 6 | 21,5 | 12 | 10 |
| HP6510 6-1/8 | 6 | R1/8 | 16 | 11,7 | 13,2 | 7,5 | 22 | 12 | 10 |

Racores mod. HPR6512



Conector macho
Rosca métrica paralela



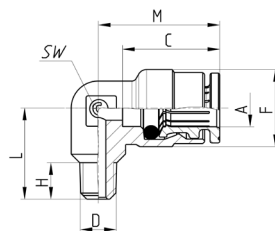
| Mod. | A | D | C | G | H | L | SW1 | Peso (g) |
|-------------------|---|---------|----|------|-----|------|-----|----------|
| HPR6512 4-M5 | 4 | M5x0,8 | 14 | 8,8 | 4 | 20 | 2 | 4 |
| HPR6512 4-M6x1 | 4 | M6x1 | 14 | 8,8 | 4,5 | 20,5 | 2,5 | 6 |
| HPR6512 4-M6x0,75 | 4 | M6x0,75 | 14 | 8,8 | 4,5 | 20,5 | 2,5 | 6 |
| HPR6512 6-M5 | 6 | M5x0,8 | 16 | 11,7 | 4 | 22 | 2 | 8 |
| HPR6512 6-M6x1 | 6 | M6x1 | 16 | 11,7 | 4,5 | 22,5 | 2,5 | 8 |
| HPR6512 6-M6x0,75 | 6 | M6x0,75 | 16 | 11,7 | 4,5 | 22,5 | 2,5 | 8 |

* = con junta
● = con junta tórica

Racores mod. HP6500



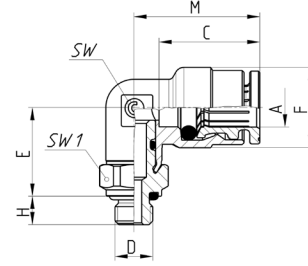
Codo macho fijo
Rosca métrica cónica y BSPT ISO-7



| Mod. | A | D | C | F | H | L | M | SW | Peso (g) |
|------------------|---|---------|----|------|------|------|------|----|----------|
| HP6500 4-M6x0,75 | 4 | M6x0,75 | 14 | 9 | 6 | 13,5 | 17,5 | 8 | 6 |
| HP6500 4-M6x1 | 4 | M6x1 | 14 | 9 | 6 | 13,5 | 17,5 | 8 | 6 |
| HP6500 4-M8x1 | 4 | M8x1 | 14 | 9 | 6 | 13,5 | 17,5 | 8 | 8 |
| HP6500 4-M10x1 | 4 | M10x1 | 14 | 9 | 6 | 13,5 | 17,5 | 8 | 10 |
| HP6500 4-M10x1,5 | 4 | M10x1,5 | 14 | 9 | 7,5 | 15 | 17,5 | 8 | 10 |
| HP6500 4-M12x1 | 4 | M12x1 | 14 | 10 | 7 | 15 | 19 | 10 | 15 |
| HP6500 4-1/8 | 4 | R1/8 | 14 | 9 | 7,5 | 15 | 17,5 | 8 | 10 |
| HP6500 4-1/4 | 4 | R1/4 | 14 | 10 | 11,5 | 19,5 | 19 | 10 | 15 |
| HP6500 6-M6x0,75 | 6 | M6x0,75 | 16 | 12,7 | 6 | 15 | 20 | 9 | 8 |
| HP6500 6-M6x1 | 6 | M6x1 | 16 | 12,7 | 6 | 15 | 20 | 9 | 8 |
| HP6500 6-M8x1 | 6 | M8x1 | 16 | 12,7 | 6,5 | 14 | 20 | 9 | 10 |
| HP6500 6-M10x1 | 6 | M10x1 | 16 | 12,7 | 6 | 14 | 20 | 9 | 11 |
| HP6500 6-M10x1,5 | 6 | M10x1,5 | 16 | 12,7 | 7 | 15,5 | 20 | 9 | 11 |
| HP6500 6-M12x1 | 6 | M12x1 | 16 | 12,7 | 7 | 14,5 | 20 | 9 | 11 |
| HP6500 6-1/8 | 6 | R1/8 | 16 | 12,7 | 7,5 | 15,5 | 20 | 9 | 11 |
| HP6500 6-1/4 | 6 | R1/4 | 16 | 12,7 | 12 | 19,5 | 20 | 9 | 11 |

Racores mod. HP6522

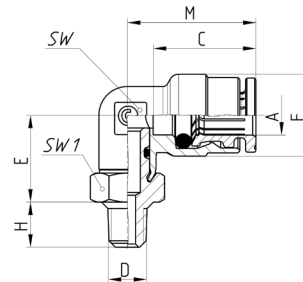
Codo macho giratorio
Rosca métrica paralela y BSPP ISO-228



| DIMENSIONES | | | | | | | | | | |
|------------------|---|---------|----|------|------|-----|------|----|-----|----------|
| Mod. | A | D | C | E | F | H | M | SW | SW1 | Peso (g) |
| HP6522 4-M5 | 4 | M5x0,8 | 14 | 13 | 9 | 4 | 17,5 | 8 | 8 | 12 |
| HP6522 4-M6 | 4 | M6x1 | 14 | 13 | 9 | 4,5 | 17,5 | 8 | 9 | 14 |
| HP6522 4-M6x0,75 | 4 | M6x0,75 | 14 | 13 | 9 | 4,5 | 17,5 | 8 | 9 | 14 |
| HP6522 4-M8x1 | 4 | M8x1 | 14 | 14,5 | 9 | 6 | 17,5 | 8 | 10 | 15 |
| HP6522 4-M10x1 | 4 | M10x1 | 14 | 14,5 | 9 | 6 | 17,5 | 8 | 12 | 23 |
| HP6522 4-1/8 | 4 | G1/8 | 14 | 14,5 | 9 | 6 | 17,5 | 8 | 12 | 15 |
| HP6522 4-1/4 | 4 | G1/4 | 14 | 15,5 | 9 | 7 | 17,5 | 8 | 15 | 25 |
| HP6522 6-M5 | 6 | M5x0,8 | 16 | 13,5 | 12,7 | 4 | 20 | 9 | 10 | 14 |
| HP6522 6-M6 | 6 | M6x1 | 16 | 14 | 12,7 | 4,5 | 20 | 9 | 10 | 16 |
| HP6522 6-M6x0,75 | 6 | M6x0,75 | 16 | 14 | 12,7 | 4,5 | 20 | 9 | 10 | 16 |
| HP6522 6-M8x1 | 6 | M8x1 | 16 | 15 | 12,7 | 6 | 20 | 9 | 10 | 19 |
| HP6522 6-M10x1 | 6 | M10x1 | 16 | 15 | 12,7 | 6 | 20 | 9 | 12 | 25 |
| HP6522 6-1/8 | 6 | G1/8 | 16 | 15 | 12,7 | 6 | 20 | 9 | 12 | 19 |
| HP6522 6-1/4 | 6 | G1/4 | 16 | 15,9 | 12,7 | 7 | 20 | 9 | 15 | 29 |

Racores mod. HP6520

Codo macho giratorio
Rosca métrica cónica y BSPT ISO-7

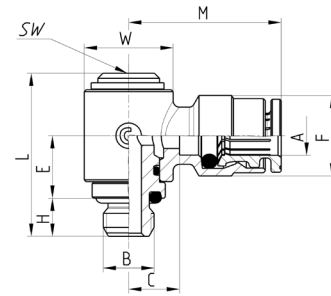


| DIMENSIONES | | | | | | | | | | |
|----------------|---|-------|----|------|------|-----|------|----|-----|----------|
| Mod. | A | D | C | E | F | H | M | SW | SW1 | Peso (g) |
| HP6520 4-M6x1 | 4 | M6x1 | 14 | 13 | 9 | 6 | 17,5 | 8 | 10 | 10 |
| HP6520 4-M8x1 | 4 | M8x1 | 14 | 14 | 9 | 6 | 17,5 | 8 | 10 | 12 |
| HP6520 4-M10x1 | 4 | M10x1 | 14 | 14 | 9 | 6 | 17,5 | 8 | 12 | 15 |
| HP6520 4-M12x1 | 4 | M12x1 | 14 | 14 | 9 | 6 | 17,5 | 8 | 14 | 20 |
| HP6520 4-1/8 | 4 | R1/8 | 14 | 13 | 9 | 7,5 | 17,5 | 8 | 12 | 15 |
| HP6520 4-1/4 | 4 | R1/4 | 14 | 13 | 9 | 11 | 17,5 | 8 | 14 | 25 |
| HP6520 6-M6x1 | 6 | M6x1 | 16 | 13,5 | 12,7 | 6 | 20 | 9 | 10 | 14 |
| HP6520 6-M8x1 | 6 | M8x1 | 16 | 14,5 | 12,7 | 6 | 20 | 9 | 10 | 17 |
| HP6520 6-M10x1 | 6 | M10x1 | 16 | 14,5 | 12,7 | 6 | 20 | 9 | 12 | 21 |
| HP6520 6-M12x1 | 6 | M12x1 | 16 | 14,5 | 12,7 | 6 | 20 | 9 | 14 | 23 |
| HP6520 6-1/8 | 6 | R1/8 | 16 | 13,5 | 12,7 | 7,5 | 20 | 9 | 12 | 21 |
| HP6520 6-1/4 | 6 | R1/4 | 16 | 13,5 | 12,7 | 11 | 20 | 9 | 14 | 28 |

Racores mod. HP6622



Banjo individual giratorio
Rosca métrica paralela y BSPP ISO-228

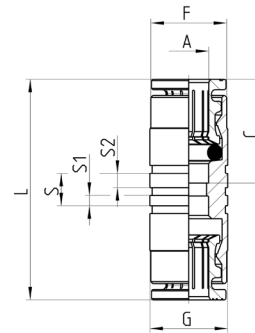


| Mod. | A | B | C | E | F | H | L | M | SW | W | Peso (g) |
|---------------|------|------|---|------|------|-----|------|----|----|------|----------|
| HP6622 6-M6 | 6,17 | M6x1 | 8 | 11,5 | 12,7 | 4,5 | 25,8 | 24 | 5 | 13,9 | 27 |
| HP6622 6-M8x1 | 6,17 | M8x1 | 8 | 9,75 | 12,7 | 6 | 25,7 | 24 | 5 | 13,9 | 29 |
| HP6622 6-1/8 | 6,17 | G1/8 | 8 | 9,75 | 12,7 | 6 | 25,7 | 24 | 5 | 13,9 | 32 |

Racores mod. HP6580



Conector unión

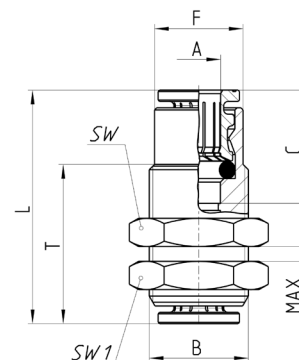


| Mod. | A | C | F | G | L | S | S1 | S2 | Peso (g) |
|----------|---|----|------|----|----|---|-----|-----|----------|
| HP6580 4 | 4 | 14 | 8,4 | 9 | 29 | 5 | 1,6 | 2,2 | 14 |
| HP6580 6 | 6 | 16 | 11,7 | 12 | 34 | 5 | 1,6 | 2,2 | 20 |

Racores mod. HP6590



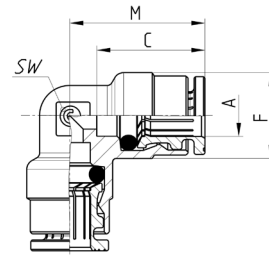
Pasamuros
Rosca métrica cónica



| Mod. | A | B | C | F | L | MAX | SW | SW1 | T | Peso (g) |
|----------|---|-------|----|------|----|------|----|-----|------|----------|
| HP6590 6 | 6 | M14x1 | 16 | 12,5 | 33 | 2,12 | 17 | 17 | 22,5 | 34 |

Racores mod. HP6550

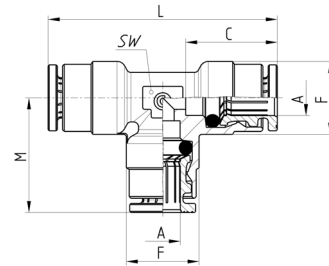
Conector en codo



| DIMENSIONES | | | | | | |
|-------------|---|----|------|------|----|----------|
| Mod. | A | C | F | M | SW | Peso (g) |
| HP6550 4 | 4 | 14 | 9 | 17,5 | 8 | 15 |
| HP6550 6 | 6 | 16 | 12,7 | 20 | 9 | 21 |

Racores mod. HP6540

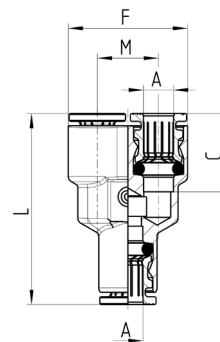
Conector en T



| DIMENSIONES | | | | | | | |
|-------------|---|----|------|----|------|----|----------|
| Mod. | A | C | F | L | M | SW | Peso (g) |
| HP6540 4 | 4 | 14 | 9 | 35 | 17,5 | 8 | 20 |
| HP6540 6 | 6 | 16 | 12,7 | 40 | 20 | 9 | 30 |

Racores mod. HP6560

Conector en Y

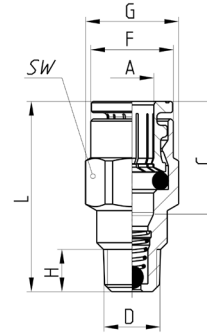


| DIMENSIONES | | | | | | |
|-------------|---|----|------|----|------|----------|
| Mod. | A | C | F | L | M | Peso (g) |
| HP6560 6 | 6 | 16 | 24,4 | 39 | 12,5 | 34 |

Racores mod. HP6510 VNR



Conector macho
Rosca métrica cónica y BSPT ISO-7

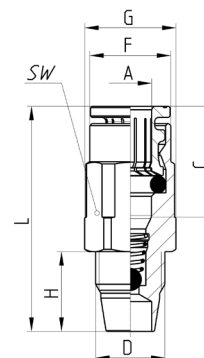


| Mod. | A | D | C | F | G | H | L | SW | Peso (g) |
|--------------------|---|-------|----|------|------|-----|------|----|----------|
| HP6510 4-M8x1-VNR | 4 | M8x1 | 14 | 8,8 | 10,9 | 6 | 27,5 | 10 | 13,5 |
| HP6510 4-M10x1-VNR | 4 | M10x1 | 14 | 8,8 | 11 | 6 | 27,5 | 10 | 17,5 |
| HP6510 4-1/8-VNR | 4 | R1/8 | 14 | 8,8 | 11 | 7,5 | 27,5 | 10 | 17,5 |
| HP6510 6-M8x1-VNR | 6 | M8x1 | 16 | 11,7 | 13,2 | 6 | 27 | 12 | 14,5 |
| HP6510 6-M10x1-VNR | 6 | M10x1 | 16 | 11,7 | 13,2 | 6 | 27 | 12 | 16,5 |
| HP6510 6-1/8-VNR | 6 | R1/8 | 16 | 11,7 | 13,2 | 7,5 | 27 | 12 | 16,5 |

Racores mod. HP6511 VNR



Conector macho
Rosca métrica paralela

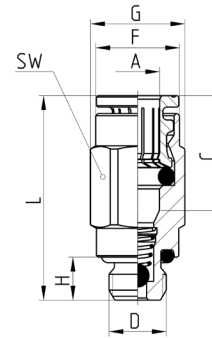


| Mod. | A | D | C | F | G | H | L | SW | Peso (g) |
|--------------------|---|-------|----|------|------|------|------|----|----------|
| HP6511 4-M10x1 VNR | 4 | M10x1 | 14 | 8,8 | 13,2 | 11,5 | 33 | 12 | 22 |
| HP6511 6-M10x1 VNR | 6 | M10x1 | 16 | 11,7 | 13,2 | 11,5 | 32,5 | 12 | 19 |

Racores mod. HP6512 VNR

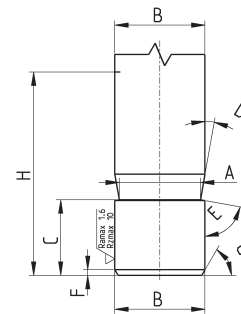


Conector macho
Rosca métrica paralela y BSPP ISO-228



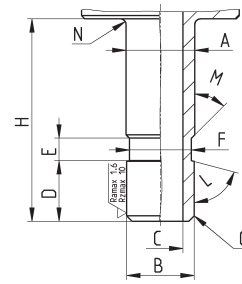
| Mod. | A | D | C | F | G | H | L | SW | Peso (g) |
|--------------------|---|-------|----|------|------|---|------|----|----------|
| HP6512 4-M8x1-VNR | 4 | M8x1 | 14 | 8,8 | 11,5 | 6 | 27,5 | 10 | 16 |
| HP6512 4-M10x1-VNR | 4 | M10x1 | 14 | 8,8 | 11,5 | 6 | 27,5 | 10 | 18 |
| HP6512 4-1/8-VNR | 4 | G1/8 | 14 | 8,8 | 11,5 | 6 | 27,5 | 10 | 18 |
| HP6512 6-M8x1-VNR | 6 | M8x1 | 16 | 11,7 | 13,2 | 6 | 28,5 | 12 | 17 |
| HP6512 6-M10x1-VNR | 6 | M10x1 | 16 | 11,7 | 13,5 | 6 | 27 | 12 | 21,5 |
| HP6512 6-1/8-VNR | 6 | G1/8 | 16 | 11,7 | 13,5 | 6 | 27 | 12 | 21,5 |

Ranura para tubo metálico realizada con la herramienta de ranurado Camozzi 8TRT (o maquinado)



| Código | A | B | C | D | E | F | G | H |
|--------|-----|---|------|-----|-----|-----|-----|------|
| — | 3,4 | 4 | 5,3 | 10° | 80° | 0,5 | 45° | 16,5 |
| — | 5,2 | 6 | 6,25 | 10° | 80° | 0,5 | 45° | 18 |

Ranura para tubo metálico realizada por maquinado



| Código | A | B | C | D | E | F | G | H | L | M | N |
|--------|-----|---|---|-----|---|-----|---------|------|-----|-----|-----|
| — | 4,1 | 4 | 2 | 5,3 | 2 | 3,5 | 0,5x45° | 16,5 | 75° | 45° | 0,5 |
| — | 6,1 | 6 | 4 | 5,4 | 2 | 5,5 | 0,5x45° | 18 | 75° | 45° | 0,5 |

Herramienta para cortar tubos mod. PNZ... y PNZP-12

Corta-tubos mod. PNZ...: las navajas de repuesto se pueden pedir por separado.

Corta-tubos mod. PNZP-12: plástico.



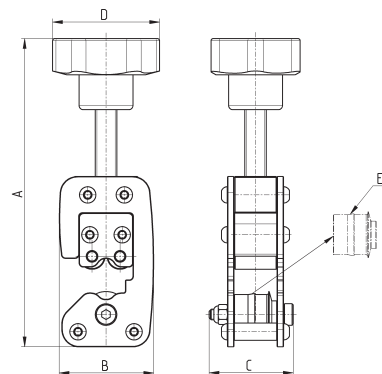
PNZ-...



PNZP-12

| Mod. | |
|---------|---|
| PNZ-12 | capaz de cortar tubos desde Ø hasta 12 mm |
| PNZ-25 | capaz de cortar tubos desde Ø hasta 25 mm |
| PNZP-12 | capaz de cortar tubos desde Ø hasta 12 mm |

Herramienta de ranurado para tubos metálicos



| Mod. | Tubo Ø | A (max) | B | C | D | Peso (g) | E (rueda de repuesto) |
|--------|--------|---------|------|----|----|----------|-----------------------|
| 8TRT 4 | 4 | 138 | 43.5 | 39 | 50 | 450 | RTRT 4 |
| 8TRT 6 | 6 | 140 | 43.5 | 39 | 50 | 450 | RTRT 6 |